

Will Barker  
& Co

# DISPERSAL AUCTION

OLD LEAKE, BOSTON, PE22 9NU

By instruction from Charles Wright & Sons Ltd & C. Wright (Farmers) Ltd.



27<sup>th</sup> JUNE 2026 - 10am ONLINE BIDDING [WILLBARKER.CO.UK](http://WILLBARKER.CO.UK)

12 The Point, Lions Way, Sleaford, Lincolnshire, NG34 8GG | 01529 414555 | [info@willbarker.co.uk](mailto:info@willbarker.co.uk)



Lot 277



Lot 257



Lot 269



Lot 264



Lot 284



Lot 282



Lot 272



Lot 271

By instructions from Charles Wright & Sons Ltd & C. Wright (Farmers) Ltd

**Church Road, Old Leake, Boston, Lincs, PE22 9NU**

**SATURDAY 27<sup>th</sup> JUNE 2026 at 10am**

**View day: Friday 26<sup>th</sup> June from 10am – 4pm**

**INTRODUCTION** - This dispersal auction is one of the largest farm machinery sales of exceptionally well maintained farm equipment (and often family operated). Andrew & Richard have ceased their contracting business and wish to thank all of their loyal customers for many years of service.

**PAYMENTS - All accounts must be settled on the day of the sale**

Unless prior arrangements have been made with us, methods of payment are:

- 1 Cash in amounts under £10,000. We cannot accept cash payments over £10,000.
- 2 Cheques supported by either a letter of reference from your bank confirming funds for the auction, or a cheque guarantee card to cover the sum of your purchase.
- 3 Credit/Debit card machine will be available on the day of the Auction.

**The items are left at the purchasers' risk.**

Enquiries should be made to Will Barker & Co on **01529 414 555**

**REMOVAL** - Lots will be available for collection with the presentation of the associated paid receipt. Lots are the buyer's responsibility at the fall of the hammer and should be removed by Saturday 4<sup>th</sup> July 2026.

**BUYERS REG** - Intending buyers must register themselves prior to any purchase & will be able to register on both the view day & sale day.

**New buyers must bring proof of identity to be able to bid.**

**CAR PARKING** – A small area of car parking is available opposite the site.

**CONDITIONS OF SALE** - The sale will be conducted in accordance with the Standard Conditions of Sale. Please refer to these conditions in the back of this catalogue.

**There will be a buyer's premium of 5% of the purchase price.**

To buy online there is an additional internet surcharge:

On our website ([willbarker.auctionmarts.com](http://willbarker.auctionmarts.com)) – **1.5%**

On Bidspotter ([bidspotter.co.uk](http://bidspotter.co.uk)) – **4%**

**MILEAGE & HOURS** - No warranty is made to the description of the lots.

**VAT** - Will be charged on the purchase price where applicable and the buyer's premium.

**FORKLIFT** – A forklift will be available for loading on the sale day.

**Please note:** Tractors & vehicles are only to be started by a member of the auction staff, and they will not be started once the auction has commenced.

To view up to date photos of the lots, please visit our website.



Lot 328



Lot 328



Lot 327



Lot 327



Lot 326



Lot 326



Lot 325



Lot 325

### ORDER OF SALE

There will be one single auction commencing with **Lot 1 at 10am**

- Lot 328 (18) **Ropa Euro Tiger 6** – 6 row beet tanker harvester, Bunker unloading system, 45-50 hydraulic variable row widths, RR lifting unit, all-rounder topper, R concept, comfort cabin with glass R touch terminal, **Volvo** 16.12L engine, 768hp engine, no AdBlue, air con, 7,741ha, 8,594 hours, Reg FX68 DCE
- Lot 327 (18) **Claas Lexion 770TT** combine, **Vario 1230** header with trolley, straw chopper and chaff spreader, OSR side knives, **Merc** 580hp engine, cruise pilot GPS, laser pilot, air con, serial no 53600986, 2,111 engine hours 1,628 drum hours, Reg FX18 AHN.
- Lot 326 (15) **Claas Lexion 770TT** combine, (2013) **Vario 1050** header with trolley, straw chopper and chaff spreader, OSR side knives, **Merc** 550hp engine, cruise pilot GPS, laser pilot, air con, serial no , 3,003 engine hours, 2,185 drum hours, Reg FX15 AVK
- Lot 325 (16) **Challenger RoGator 665 D** self propelled sprayer, 18/36m, single line 4 nozzles, auto shut off, RG65D, **Alliance** IF480/80 R50, chemical locker, 6,000L tank, 500L clean water tank, NSTS 05/03/27, 7,040 hours, Reg GN66 DLK, sold with row crop wheels **Michelin** VF710/60 R42
- Lot 322 **Fendt** 724 10-stud rear wheel rim,
- Lot 321 Pr front **Fendt** 724 wheel rims, 10 stud to take tyre 600/60 R34
- Lot 320 **Michelin** 600/60 R34 front wheel, spare for **Fendt** 724
- Lot 319 Full set row crop wheels, **Kleber** 270/95 R36 front, **BKT** 340/85 R48 rear, to fit **Fendt** 716 at 72 inch adjustable centres
- Lot 318 Set **Michelin Agribib** row crop wheels, 420/90 R30 fronts, 480/80 R46 rear, to fit **Fendt** 724, at 80 inch centres
- Lot 317 Set **Michelin Agribib** row crop wheels, 380/85 R34 fronts, 380/90 R50 rear, to fit **Fendt** 724
- Lot 316 Set **BKT** row crop wheels 270/95 R32 front 10 stud and 270/95 R48 rear 8 stud, adjustable **Fendt** centres, 72/80 inch, to fit **Fendt** 716
- Lot 315 Set tyres pr **Michelin Agribib** 480/80 R46 & pr **Michelin Agribib** 420/90 R30 147A8 72 inch
- Lot 314 Set **Stocks** row crop wheels, pr **Alliance** 300/95 R52 & pr **Kleber** 320/85 R36
- Lot 313 Pair of **Fendt** 1 ton rear wheel ballast weights
- Lot 312 Single **Michelin Xeobib** 710/60 R42 for **Fendt** 724 rear tyre, part worn, 80 inch centre, 10 stud



Lot 302



Lot 302



Lot 301



Lot 301



Lot 300



Lot 300



Lot 299



Lot 299

Lot 311 Single **Michelin Xeobib** 710/60 R42 for **Fendt** 724 rear tyre, part worn, 80 inch centre, 10 stud

Lot 310 Set of row crop wheels, **Mitas** VF480/95 R50 12 stud front & **Mitas** 420/85 R38 AC8510 stud rear, 80 inch for series 9 **Fendt**

Lot 309 2x 380/80 R38 **Michelin Yieldbib** 149A8

Lot 308 2x 480/80 R50 **Michelin Spraybib** 179D

Lot 307 2x 380/90 R50 **Michelin Agribib** RC 151A8, row crop wheels, 72 inch centres, to fit **Fendt** 724

Lot 306 2x 380/85 R34 **Michelin Yieldbib**

Lot 305 Set 2x 420/90 R30 **Michelin Agribib** & 2x 480/80 R46 **Michelin Agribib**, 72inch row crop wheels, 10 stud, to fit **Fendt** 724

Lot 304 no lot

Lot 302 (18) **Fendt 943 Vario MT** crawler, 30 inch strider tracks (60%), **Fendt** vario guide, **Sisu** engine, hydraulic top link, Cat 4 linkage, full LEDs, sold with 810kg weight & **GT Engineering** toolbox, 2nd owner, new engine 1,000 hours ago, AdBlue, air con, leather seat, Vin TABF0943VJNEA1031, 5,447 hours, Reg FX18 AXZ

Lot 301 (15) **Cat Challenger MT 775E** crawler, new tracks Autumn 2025, Topcon auto steer X25 screen, Sisu engine, air con, Cat 4 linkage, full LED lights, isobus, been on farm for 2 years, with **GT Engineering** toolbox, 4,378 hours, Reg OU65 BCY

Lot 300 (19) **Fendt 930 Vario S4 Profi plus**, 4wd, 60kph, air con, 300hp, AdBlue removed, full LED lights, RTK vario guide, front tyres **Trelleborg** TM900 600/70 R34, rear tyres **BKT** VF710/75 R42, Cat 3 front linkage, hyd top link, air brakes, 8,446 hours, Reg FX19 CUH

Lot 299 (18) **Fendt 936 Vario S4 Profi plus**, 4wd, 60kph, full LED lights, RTK vario guide, front tyres **Continental** 650/65 R34, rear tyres **Alliance** 710/75 R42, air con, Cat 3 front linkage, hyd top link, air brakes, 8,190 hours, Reg FX68 BYP



Lot 298 (17) **Fendt 939 Vario Profiplus**, 60kph, 4wd, AdBlue removed, air con, full LED lights, RTK vario guide, front tyres 650/65 R34, rear tyres 710/75 R42, front pto, Cat 3 front linkage, hyd top link, air brakes, 6,932 hours, Reg FX67 EHD



Lot 297 (16) **Fendt 724 Vario Profiplus**, 4wd, 50kph, AdBlue removed, top con, auto system X30 screen, air con, Cat 3 front linkage, hyd top link, air brakes, front tyres **Michelin** VF600/60 R30, rear tyres **Michelin** VF710/60 R42, 7,784 hours, Reg FX16 BYO



Lot 296 (16) **Fendt 724 Vario Profiplus**, 4wd, 50kph AdBlue removed, top con, auto system X30 screen, air con, Cat 3 front linkage, hyd top link, air brakes, front tyres **Michelin** VF600/60 R30, rear tyres **Michelin** VF710/60 R42, 8,113 hours, Reg FX16 BYN

Lot 294 Fertiliser bag lifter, with **Euro 8** back plate fittings, p.n.o. FBL2604

Lot 293 **GP** bucket euro twin hook, 2.54m WB22-1, for **Fendt** loader



Lot 292 (15) **Fendt 724 Vario Profiplus**, 4wd, 50kph, with **Quicke Q7M** front end loader, air con, Cat 3 front linkage, hyd top link, air brakes, new engine at 8,000 hours, topcon X25 screen, owned from new, front tyres **Michelin** VF600/60 R30, rear tyres **Michelin** VF710/60 R42, 10,275 hours, Reg FX15 CCY sold with Pallet tines on **Euro 8** back plate fittings



Lot 291



Lot 291



Lot 290



Lot 290



Lot 275



Lot 275

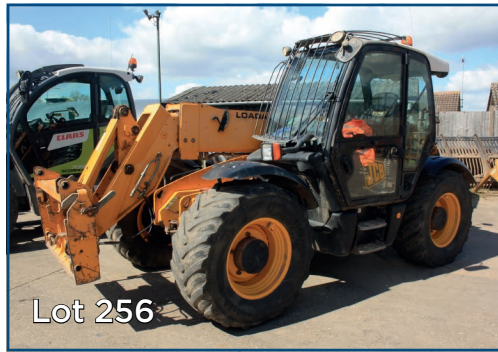
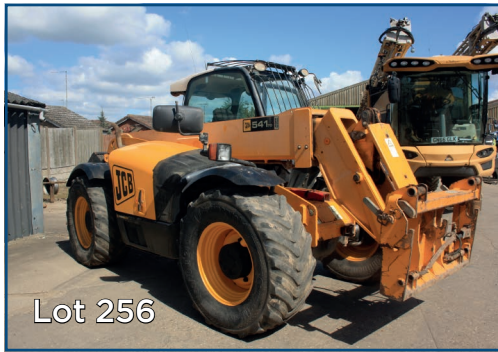


Lot 274



Lot 274

- Lot 291 (15) **Fendt 716 Vario Profi Power**, 4wd, 50kph, air con, Cat 3 front linkage, hyd top link, air brakes, AdBlue removed, RTK X25 Topcon autosteer, air con, air suspension, front tyres **Trelleborg** 540/65 R28, rear tyres **Trelleborg** 650/65 R38, 8,400 hours, Reg FX15 CCZ
- Lot 290 (21) **Claas Axion 870**, 50kph, **Claas** auto steer system, cab suspension, air con, Cat 3 front linkage, hyd top link, air brakes, AdBlue, S10 auto guide, full LED lights, front tyres **Michelin** 600/70 R30, rear tyres **BKT** 710/70 R42, 5,621 hours, Reg KX21 DWV
- Lot 288 (17) **Suton** bag lifter 6x 600kgs, **Claas** back plate fittings, serial 41161 Model no 08957WA rated load at 3,000kg
- Lot 287 (18) **Suton** Scorpion 4 bag lifter, **Claas** back plate fittings
- Lot 284 **Suton** beet/root basket, 2.8m, serial no 40365, **Claas** back plate fittings
- Lot 283 (11) **Suton** beet basket, 2.8m, 4.5 bucket 550-80, serial no 26217, **Claas** back plate fittings
- Lot 282 (19) **Suton** beet basket, 3.47 cubic meters, 2.5m, serial no 43167, **Claas** back plate fittings
- Lot 281 **Claas** waste bucket, with **Claas** back plate fittings, WB22-2
- Lot 280 **Suton** soil bucket, 2.3m wide, 1.5 cubic meters, serial no 40179, **Claas** back plate fittings
- Lot 279 **Suton** material handling bucket, 2.5m, serial no 28811, **Claas** back plate fittings
- Lot 278 **Suton** material handling bucket, 2.64m, serial no 41153, **Claas** back plate fittings
- Lot 277 (12) 2.5m Lime bucket, **Claas** back plate fittings, 3.5 cubic meters, with side extensions serial no 26285
- Lot 275 (16) **Claas Scorpion 9055** telescopic handler, 9m reach, 5.5-ton, full LED lights, rear pick up hitch, **Claas** headstock, with pallet tines, 8,619 hours, Reg FX66 BJO
- Lot 274 (17) **Claas Scorpion 7055 Vario Power** telescopic handler, air con, 7m reach, 5.5 ton, AdBlue removed, **Claas** headstock, rear pickup hitch, on farm since new, with pallet tines, 7,857 hours, Reg FX17 DKU



- Lot 272 (06) **Stronga Ltd** SA2300 man cage, with **JCB** back plate fittings
- Lot 271 (09) **Stronga** 4 bag fertiliser bag attachment, **JCB** back plate fittings, model SBL2400, serial 4205.
- Lot 270 **Attachment** grain pusher, with Q fit for **JCB**
- Lot 269 (11) **Suton** grain pusher GP600, with 84 inch blade, serial no 25958, with Q fit for **JCB**
- Lot 268 (10) **Suton** big bag lifter, with Q fit for **JCB**, serial 24612
- Lot 267 (10) **Suton/** Gurney Reeve big bag lifter, **JCB** back plate fittings, model BBL600, serial no 25235
- Lot 265 **Suton** beet basket, 2.90 (114 inch) serial no 24435, with **JCB** back plate fittings
- Lot 264 (10) **Suton** beet basket, with bolt on blade, model ELCR108, 108 cubic meters, serial no 25001, **JCB** back plate fittings
- Lot 263 **JCB** teleporter grain bucket, **JCB** back plate fittings
- Lot 262 **JCB** 4m grain bucket & bolt on edge, with **JCB** back plate fittings
- Lot 260 HDEB120 lime bucket assembly, **JCB** back plate fittings
- Lot 259 **Suton** soil bucket, 91 inch, reinforced heavy duty, serial 11365 with **JCB** back plate fittings
- Lot 258 (09) **Suton** material handling bucket, 2.31m (91 inch) blade, 1.5 cubic meters, serial no 24029, **JCB** back plate fittings
- Lot 257 **Strimech** grain bucket, serial no 203226, **JCB** back plate fittings
- Lot 256 (08) **JCB 541-70 Agri Super Loadall** telescopic handler, rear pick up hitch, Q fit headstock, air con, on farm since new, with pallet tines, 7,899 hours, Reg FX58 FZF, the vendors reserve the right to use this item until the Wednesday after the sale
- Lot 255 (14) **JCB 541-70 Loadall** telescopic handler, 7m reach, 4 ton, rear pick up hitch, Q fit headstock, air con, with pallet tines, 6,660 hours, Reg AE14 EZL, the vendors reserve the right to use this item until the Wednesday after the sale
- Lot 251 (06) **JCB 8080 ZTS** Midi Excavator/digger, rubber tracks, front blade serial no SLP080806E1025116, with 3 buckets
- Lot 245 (15) **Isuzu D-Max** Fury D/cab, 2.5L diesel, 74,000 miles, MOT 10/07/27, Truckman top, cloth seats with seat covers, 6 speed manual, air con, Reg YT65 BAO
- Lot 244 (19) **Toyota Hilux Invincible**, 4wd, pick-up truck, alloy wheels, leather seats, automatic, 2.4L diesel, cab, MOT 05/03/27, 103,000 miles, Reg A14 CGW (sold with private plate)



Lot 235



Lot 234



Lot 231



Lot 232



Lot 226



Lot 233



Lot 227



Lot 228

Lot 243 (14) **Land Rover Freelander 2** TD4 GS, 2.2L diesel, 151,000 miles, grey, MOT 07/04/27, towbar, leather interior, aircon, manual 6 speed, Reg FY14 OBA

Lot 242 (19) **Sprinter 314 van** L2 FWD, 2.1L diesel, MOT 25/03/27, Reg KY19 BPO

Lot 235 (14) **Wilcox** - 68 cubic yard, tri axle planksided tipping trailer with sloped front and electric rollover easy sheet, weigher, TASC registered, one new axle, model FSPF.TA serial 14W12532 (CW33)

Lot 234 (16) **Wilcox Montracon** - 68 cubic yards, step framed triaxle planksided tipping trailer with electric rollover sheet, TASC registered, disc brakes, alloy wheels Model FSPF.SA Type 4DA3S1 VIN SMRB3ASCXFN117432 (CW40)

Lot 233 (18) **Wilcox Montracon** 68 cubic yards, step framed triaxle planksided tipping trailer with electric rollover sheet, TASC registered, disc brakes, model FSPF.SA, type 4DA3S1 VIN SMRB3ASCXJN123451 (CW42)

Lot 232 (23) **STAS** - 71 cubic yards plank-sided tri-axle straight frame tipping trailer, disc brakes, alloy wheels, electric sheet, alloy chassis, with Newton trailers weigher, grain sock, serial no 17722 (CW38)

Lot 231 (23) **STAS** - 71 cubic yards plank-sided tri-axle straight frame tipping trailer, disc brakes, alloy wheels, electric sheet, alloy chassis, with Newton trailers weigher, underslung toolbox, grain sock.

Lot 228 (15) **Montracon** 40ft triaxle curtainside tautliner trailer, rear barn doors, new plain XL curtains in 2025, TASC tested, air brakes (CW35)

Lot 227 (25) **Montracon** 40ft triaxle curtainside tautliner trailer, rear barn doors, disc brakes, **Freespan** SDC, XL curtains, serial no 18552 (CW41)

Lot 226 (97) **Ward Fabrications** two pot stainless steel tri-axle tanker trailer, used for liquid fertiliser, with petrol Honda GX160 pump, MOT April 2027 ID A256255 (CW16)

Lot 225 (15) **Montracon** 40ft triaxle curtainside tautliner trailer, rear barn doors. Out of test (CW34)



Lot 223 (16) **Scania G450**, 6x2/2, mid lift axle, MOT 30/09/26, sleeper cab, G cab, automatic, on 315/80 R22.5 tyres, pto tipping equipment, VIN YS2R6X20009248317  
586,000km, Reg C12 WGT (sold with private plate)

Lot 222 (18) **Scania R450** 6x2/2, mid lift axle MOT 30/04/27, 3 Axle + 3 Axle Artic, sleeper cab, automatic, tipping equipment, new **Scania** piston, liners & injectors, rear-mounted battery, 873,000km, Reg C11 WGT (sold with private plate)

Lot 221 (18) **Scania S500**, 6x2/2, mid lift axle 3 Axle + 3 Axle Artic, MOT 30/04/27, alloy wheels, tipping equipment, sleeper cab, automatic, 315/70 R22.5 tyres, VIN YS2S6X20009245585  
720,000km, Reg C16 WGT (sold with private plate)

Lot 220 (19) **Scania R450 A** 6x2/2, mid lift axle MOT 31/01/27, 3 Axle + 3 Axle Artic, sleeper cab, automatic, steel wheels, tipping equipment, rear mounted battery, VIN YS2R6X20005553059  
657,000km, Reg C10 WGT (sold with private plate)

Lot 219 (20) **Scania R500 A** 6x2/2, mid lift axle, 3Axle + 3 Axle Artic tractor unit, with alloy wheels, sleeper cab, automatic, tipping equipment, new **Scania** piston, liners & injectors, rear mounted battery, 570,000km, Reg C9 WGT (sold with private plate)



Lot 216



Lot 217



Lot 215



Lot 215



Lot 213



Lot 214



Lot 211



Lot 210

Lot 217 (07) **Bailey** 15 Ton TB trailer with sprung drawbar, Monocoque body with full arched front window, hydraulic tail door with grain chute, hydraulic brakes, twin tipping rams, 10 stud commercial axles with 413 Super Singles, metal mud guards, serial no 6916-15T (W3)

Lot 216 (14) **Bailey** 18 Ton Beeteaper trailer with sprung drawbar, Monocoque body with full arched front window, hydraulic tail door with grain chute, air & hydraulic brakes, twin ram, 10 stud commercial axles with super singles, mud guards, underslung toolbox, high level rear lights (W5)

Lot 215 (14) **Bailey** 18 Ton Beeteaper trailer with sprung drawbar, Monocoque body with full arched front window, hydraulic tail door with grain chute, air & hydraulic brakes, twin ram, 10 stud commercial axles with 650/55 R26.5 flotation tyres, mud guards, underslung tool box, bolt on beet/greedy side board, high level rear lights, rollover sheet, serial no 13210-18T (W7)

Lot 214 (22) **Bailey** 20 Ton Beeteaper trailer with sprung drawbar, Monocoque body with full arched front window, hydraulic tail door with grain chute, air & hydraulic brakes, single ram, 10 stud commercial axles with 650/55 R26.5 flotation tyres, metal mud guards, underslung tool box, bolt on beet/greedy side board, rear towing lugs and high level rear lights (W2)

Lot 213 (22) **Bailey** 20 Ton Beeteaper trailer with sprung drawbar, Monocoque body with full arched front window, hydraulic tail door with grain chute, air & hydraulic brakes, single ram, 10 stud commercial axles with 650/55 R26.5 flotation tyres, mud guards, underslung tool box, bolt on beet/greedy side board, rear towing lugs and high level rear lights, serial no 2426920 (W1)

Lot 211 (17) **Bailey** 20 Ton Beavertail lowloader, plastic strap box, sprung drawbar, air brakes, hydraulic ramps, back fill ins, serial no 1633520 (W18)

Lot 210 (15) **Bailey** 20 Ton Beavertail triaxle lowloader with sprung drawbar, leaf suspension, plastic strap box, air & hydraulic brakes, with the back fill ins to make flat bed, manual ramps, serial no 14539-20T (W17)



Lot 208



Lot 209



Lot 206



Lot 207



Lot 194



Lot 205



Lot 193



Lot 192

Lot 209 (19) **Bailey** 18-ton flatbed trailer with sprung drawbar, checker plate floor with Headboard, air and hydraulic brakes, tri axle on super singles, with strapping points and underslung toolbox, serial no 1857618 (W10)

Lot 208 (10) **Bailey** 14-ton flatbed trailer with sprung drawbar, checker plate floor Headboard, air and hydraulic brakes, dual axle on super singles, with strapping points and underslung toolbox, serial no 9258-14T (W14)

Lot 207 **Larrington** flatbed trailer (former Beaver Tail) with sprung drawbar, 7m deck with checker plate floor, arched Headboard, air brakes, tri axle on super singles, with strapping points and underslung toolbox, serial 650RL03 (W11)

Lot 206 **Wilcox** 18T aluminium lorry conversion trailer, dual axle, super singles, Aluminium body with swinging tail door, PTO tipping pump.

Lot 205 **Fruehauf** 27ft tri axle curtain sided tautliner, on tractor drawbar (CW30)

Lot 204 Stainless steel water bowser with dolly on super singles (CW16)

Lot 203 5th Wheel towing Dolly with long drawbar

Lot 200 Pallet of spares for **CTM** sugar beet cleaner

Lot 199 Pallet of spares for **CTM** sugar beet cleaner

Lot 198 Pallet of spares for **CTM** sugar beet cleaner

Lot 197 Pallet of spares for **CTM** sugar beet cleaner

Lot 196 Pallet of spares for **CTM** sugar beet cleaner

Lot 195 Pallet of spares for **CTM** sugar beet cleaner

Lot 194 (05) **CTM 9000** Slewing sugar beet cleaner loader, with pre cleaner, serial no 1400515001c

Lot 193 (06) **CTM 9000** Rigid sugar beet cleaner loader, serial no 1400619001

Lot 192 (19) **CTM 9000** beet cleaner loader, roller system, 6 rollers, 2,188 hours, serial no 1401992040



Lot 191 (21) **Vaderstad Rapid RDA800S** - 8m min till disc drill, 3 rows independent depth control discs, 36m tramliners, on lift arms, not on drawbar, isobus control, first used in 2022 drilled approx. 5,000ha, sold with 2011 **Vaderstad** bio drill, new coulters & working discs a year ago, e-service seed eye, serial no 18200

Lot 190 (14) **Lemken Solitair 9** - 6m folding combination drill with eradicator tines, tramliners, 2 rows disc coulters, rear following harrow, serial no 280423 Type 400-DS150 on (19) **Lemken Zirkon 12** 6m folding power harrow, cast packer roller, serial no 405859.

Lot 189 (22) **Dalbo Powerroll 1230** 12.3m folding Cambridge rolls, with breaker rings, floatation tyres, hydraulic folding, serial no 108679 Type Powerroll 1230X55 CM Cambridge

Lot 188 **He-Va 820** - 8.2m hydraulic folding Tip Roller, with 486-530 crosskill rings SAT System uniform consolidation weight transfer & demount screw jack

Lot 187 Qty **He-Va** Euro tiller spares

Lot 186 **He-Va** 8m Euro-Tiller Hydraulic folding tined cultivator with depth wheels and 7 rows of spring tines, rear Shatter board paddles & following harrows

Lot 185 (19) **Horsch Joker 6RT** Quick disc harrow cultivator, with hydraulic levelling boards, 2 rows of discs on a single arm with double DD packer on floatation tyres with air brakes, on farm since new, serial no 28192101

Lot 184 (07) **Toucan Comdor** 6m trailed precision seedbed cultivator, 2 sets coil rollers, manually adjusted clod levelling boards, spring tines, rear press wheels, wheel eradicator tines, serial no 0504

Lot 183 (10) **Toucan Comdor** 6m trailed precision seedbed cultivator, 2 sets coil rollers, hydraulic clod levelling boards, spring tines, rear press, front wheel packer and wheel eradicator tines, on farm since new, serial no 0058, model TAPIR 10.5

Lot 182 Qty **Dalbo Rollomaximum** spares

Lot 181 (20) **Dalbo Rollomaximum 620** seedbed cultivator with hydraulic "cracker board" front paddles to front rollers, spring tines and rear rollers with eradicator tines, linkage arm mounted, serial no 106147



Lot 180



Lot 179



Lot 176



Lot 176



Lot 174



Lot 177



Lot 172



Lot 173

Lot 180 (11) **Kuhn HR 6004DR** hydraulic folding power harrow, with tooth packer roller, wheel eradicator tines, rear towing frame, aux hydraulics, serial no C0053

Lot 179 (17) **Kuhn HR 6040R** hydraulic folding power harrow with hydraulic levelling board and hydraulic depth control on toothed packer roller, wheel eradicator tines, in cab control box for gearbox temperature, serial no A0096

Lot 178 Qty of various **Lemken** plough spares

Lot 177 (15) **Lemken Juwel 8** - manual vari width 7 furrow plough, in furrow on land with Duromax slatted mould board, rubber land wheel, serial no 416347

Lot 176 (16) **Lemken Diamant 11** hyd vari width 8 furrow plough, in furrow on land, weight transfer ram, Duromax slatted mould boards, toolbox, land wheel, serial no 432119, model Diamant 11 V OF - 8+1 L100, on farm since new

Lot 175 Qty **Simba** cultipress spares

Lot 174 **Simba** 6.6m Cultipress, hydraulic folding, rigid leading tines, hyd levelling boards & double DD ring press flotation tyres, demount stands, model CP/6.6M/FW, serial no 102560111

Lot 173 (23) **TWB** 3.2m Terminator single pass cultivator with 5 legs, 3 rows of discs, large barrel roller, floatation tyres, Linkage arm mounted, on farm from new

Lot 172 (20) **TWB** 4m Terminator single pass cultivator with 6 legs, 3 rows of discs, large barrel roller, hydraulic folding & hyd brakes, on farm from new



Lot 169



Lot 170



Lot 158 & 159



Lot 163 & 164



Lot 156



Lot 166



Lot 155



Lot 155

Lot 170 (12) **Cousin** Hydraulic Folding 7 leg V Form 4.5m subsoiler with Razor ring press, serial no 2012/119, model VF45HFLMT7RR

Lot 169 **Spaldings FL5** Flat Lift - 5 swivel tines with hydraulic depth control on tooth packer roller, model 12791, serial 901064

Lot 168 **Blench** 11 tine "C" tine drag

Lot 166 (85) **Swiftlift** 62ft long Interstore elevator, 3 phase with 4 pin plug with 600mm wide cleated belt and round hopper and **JCB** back plate end towing frame

Lot 164 (14) **Kongskilde Vibro** Crop 12 row hydraulic folding inter row cultivator with "S" tine system & rolling crop shields, serial no 410400800

Lot 163 **Kongskilde Vibro** Crop 12 row hydraulic folding inter row cultivator with "S" tine system & rolling crop shields

Lot 161 **Weedwiper** 6m tractor mounted, serial J2703

Lot 160 **CTM** Weed Surfer 6m, end tow with two spare wheels and selection of other spares

Lot 159 (16) **Monosem** 12 row hydraulic folding beet drill, electric individual row shut off, chain driven, tramlines, 20-inch row width, V4 Meka bout markers, ISOBUS ready, serial no S16R002229

Lot 158 (18) **Monosem** 12 row hydraulic folding beet drill, electric individual row shut off, electric driven, tramlines, 20-inch row width, V4 Meka bout markers, ISOBUS ready, serial no S18R003139

Lot 156 **Chafer Sentry** 36m trailed Avadex Spreader (S&K Sprayer Services Ltd conversion) with 2 x 18m **Horstine** applicators, 25 x 15kg hoppers, tracking axle, **Scharmuller** hitch, serial no 400893

Lot 155 (24) **Bunning Lowlander Mark 4 120** compact NHBD muck or lime spreader, horizontal beater bars, weigh cells, ISOBUS ready, air brakes, pto & hydraulic drive, tyres BKT IF800/70 R38, serial no 8755



Lot 154



Lot 153



Lot 151



Lot 150



Lot 145



Lot 148



Lot 146



Lot 147

Lot 154 (12) **KRM Bredal K85** twin discs 8.5 cubic meters lime & fertiliser spreader with stainless steel hopper & extension, pto & hydraulic drive, tyres Michelin 800/65 R32, NSTS tested, serial no 2706 ref B4

Lot 153 (15) **KRM Bredal K105** twin discs 10.5 cubic meters lime & fertiliser spreader with stainless steel hopper and extension, pto & hydraulic drive with reduction gearbox to reduce PTO speed added 2016, on Firestone 800/65 R32, NSTS tested, serial no 3070 ref B2

Lot 152 (18) **Amazon 42001 ZA-TS** Profis Hydro 4,200L twin disc fertiliser spreader, PTO & hydraulic drive, TS30 discs, 24/36m spread, weigh cells, ISOBUS, with hopper bumper bar & electric sheet cover, section control, spreader, Amatron 3 controller, headland fault, hopper extension, rear lights, serial no ZA00008951

Lot 151 (22) **Amazon ZA-TS** Profis Hydro 4,200L twin disc fertiliser spreader, hydraulic drive, TS30 discs, 24/36m spread, weigh cells, ISOBUS, with hopper bumper bar & hydraulic cover, section control, Amatron 4 controller, NSTS tested, serial no ZA00027106

Lot 150 (23) **Amazon ZA-TS** Profis Hydro 4,200L twin disc fertiliser spreader, hydraulic drive, TS30 discs, 24/36m spread, weigh cells, ISOBUS, with hopper bumper bar & hydraulic cover, section control, Amatron 4 controller, NSTS tested, serial no ZA00035079

Lot 148 (06) **McConnell PA70T** flail mower, 7m hydraulic Power Arm, pto driven, with D mount stands, serial M0916849

Lot 147 (18) **Kuhn TBES 262** in-line offset flail mower, with hammer knives, 2.6m, 3 point mounted, pto driven, hydraulic spools, serial no 172491

Lot 146 (22) **Maschio Giraffa XXL 230** right hand offset flail mower, pto driven, serial no NM91D0262

Lot 145 (23) **SS Professional 650** Drain Jetter with distance counter, 600m reel, 3 piston diaphragm pump, two hydraulic wheel motors PTO shaft, serial no 1008323



Lot 119



Lot 126



Lot 125



Lot 124



Lot 122



Lot 121



Lot 120



Lot 123

- Lot 142 **Suton/Gurney Reeve CH230** contractor hyd drive road brush, 3 pt mounted, serial no 45151
- Lot 141 (10) **Suton/Gurney Reeve CH230** contractor brush - hyd drive, 3 pt mounted, serial no 25200
- Lot 140 870kg 3 pt mounted front weight block
- Lot 139 **Agriweld** front mounted toolbox, 3pt mounted, serial no 19650717
- Lot 138 **Fendt** 1,250kg, 3 pt mounted front weight block
- Lot 137 **Fendt** 1,250kg weight block, with toolbox
- Lot 136 **Fendt** 2,500kg, 3 pt linkage, front mounted weight
- Lot 134 (21) **Philip Watkins** 1,000kg front weight, serial no ATT01770
- Lot 133 (21) **Philip Watkins** 1,500kg front weight, serial no ATT01769
- Lot 132 (22) **Philip Watkins** 1,250kg front weight, serial no ATT01898
- Lot 131 (23) **Philip Watkins** 1,250kg front weight, serial no ATT02124, with toolbox
- Lot 130 **Philip Watkins** 2,000kg ballast weight, serial no ATT01937
- Lot 128 (17) **Doosan 7/31E+** towable compressor, 583 hours, electric start, 750kphg, comes with lance & reel, serial no UN5731EFXHY323947
- Lot 127 (96) **AS Marston** towable fuel bowser, single axle, 1,000L, serial no 204520
- Lot 126 (15) **Bailey** 2,000L towable fuel bowser, electric fuel dispenser, 200L AdBlue, serial no 14472-2000
- Lot 125 (19) **Fuel Proof** 1,000L fuel tank, 200L AdBlue towable bowser, electric fuel dispenser, serial no 31296
- Lot 124 (18) **Fuel Proof** 2,000L diesel & 200L AdBlue tank, towable fuel bowser, with electric fuel pump, serial no 27669
- Lot 123 **Ifor Williams P7B** trailer, with mesh sides
- Lot 122 **Ifor Williams LM106G** - 10ft x 6ft Tandem axle drop sided trailer, serial no 5109137
- Lot 121 **Ifor Williams LM146G** - 14ft x 6ft Tandem axle drop sided trailer with spare wheel, serial no SCKD00000F5116733
- Lot 120 **Ifor Williams P6E** single axle quad bike trailer with fold down rear ramp, spare wheel, serial no 812487
- Lot 119 (23) **Kymco MXU 465** quad bike, Petrol, 443cc, Reg FY73 OPM, with **Richard Stocks fan jet 65** pro broadcaster, serial no 230187

### Lots 1-118 Various Items to Include:

Set row crop wheels for JD7710 or **Fendt** 320/95/50 and 320/85R36, Pr rubber crawler tracks, Blacksmiths anvil with Hardy and pritchel holes, 30,000L diesel storage tank, sold in situ, 27,500L **Horiz** diesel tank, steel door, grey, sold in situ, **AIR1** 5,000L storage tank BMV5000KE AdBlue tank, Qty of various sized bolt on front wearing blade for grain buckets, **Martin Lishman** 6m 3 point mounted sprayer with 200L tank and 12V electric pump, 3x Bird scarer gas guns, Diesel heater 215,000 BTU, 10 drawer workbench, **Big Brute** Warehouseman & tools, **Dickey-John** mini **GAC 2500**, **Dickey-John GAC 2100 GI**, serial no 1737-21029, **Mac Avant** hot water pressure washer, serial no 190413, **Mac Avant** hot water pressure washer, serial no 190790, **Medusa T5500** diesel generator, **Scharmuller K80** ball hitch drawbar insert for **Fendt 724**, **Scharmuller K80** ball hitch drawbar insert for **Fendt 724**, on ladder system, **Scharmuller K80** ball hitch drawbar insert for **Fendt 9** series, on ladder system, **Scharmuller K80** ball hitch for steering sprayer, Pr axles for **Simba** 12m rolls, Drawbar for Discovery Sport, 2x Truecraft wheel alignment tools, **Vredestein** tubeless flotation tyre 480/45-17, 18 stud axle, brand new, **Simba** cultipress 500/50-17 6 stud wheel, **Trelleborg** 710/75 R42 tyre, **Trelleborg** 800/65 R32 part worn tyre, **Trelleborg** 600/70 R34 part worn tyre, **Firestone** 380/85 R34 part worn tyre, **Alliance** 480/45-17 spare wheel & tyre, **Star SG** flotation 520/50-17 part worn

## 2026 UPCOMING AUCTIONS

### FARMERS' SUMMER AUCTION

BICKER BARS, BOSTON, PE20 3AL

18th JULY

### FARMERS' AUTUMN AUCTION

BICKER BARS, BOSTON, PE20 3AL

10th OCTOBER

Will Barker  
& Co

01529 414555

www.willbarker.co.uk info@willbarker.co.uk

WillBarkerandCo willbarkerco



Address: Church Road, Old Leake, Boston, Lincs, PE22 9NU  
What3words: ///searches.alpha.saloons

## CONDITIONS OF SALE – FARM SALE

1. The highest bidder to be the purchaser, subject to the reservation that the Auctioneer shall have the right to (a) regulate the bidding, (b) reject any bid, (c) determine at his absolute discretion all disputes regarding the bidding or any other matters arising under these Conditions, and of bidding for, withdrawing, consolidating, dividing or altering the order of the lots. No person shall be allowed to retract his or her bidding.
2. The purchaser shall pay to the Auctioneers commission at the rate of 5% of the purchase price on each and every lot purchased.
3. All bids shall be exclusive of Value Added Tax and VAT will be charged on the hammer price on each lot, if applicable, unless the Auctioneer specifically states otherwise at the time of sale.
4. The purchase money together with the commission and V.A.T. shall become payable at the fall of the hammer, if required, and must be paid on the day of the sale, such payment being made to the Auctioneer or his Clerk only. Payment by cheque must be accompanied by satisfactory references.
5. The purchaser shall give to the Auctioneer at the fall of the hammer his full name and address, and the Auctioneer will not recognise the transfer of any lot by the said purchaser nor make any alteration in the sale book in respect thereof.
6. Each and every lot shall, at the fall of the hammer, be at the sole risk and expense of the respective purchaser and the Auctioneers will not be responsible for any damage or loss occasioned by fire, theft, accident or otherwise, but no lot or lots shall become the property of the purchaser nor removable by him until the purchase money has been paid and the Auctioneers' official receipt or removal order obtained. If any lot or lots are removed in contravention of these conditions the Auctioneers shall have the power to seize the same by their servants or agents, or otherwise, to recover either the said lots or the price thereof, at their option, by action at law.
7. All lots must be removed from the place of sale in accordance with these conditions on the day of the sale or within such other times as the Auctioneers may specify. The Auctioneers reserve the right to sell any lots not so moved without notice by public auction or private treaty or to despatch the lots to the purchaser or owner at that time, at their absolute discretion, in either case at the expense of the purchaser or owner at the time as aforesaid.
8. For the purposes of the sale the Clerk of the Auctioneer shall be deemed to be agent of both the vendor and the purchaser.
9. The Auctioneers act as agent only. Each and every lot is sold with all faults and errors of description and neither the vendor nor the Auctioneers shall be responsible for the authenticity, condition, quality or correctness of description of any lot, nor have they or any person employed by either of them any authority to give any warranty or representation in respect of such matters. Any statements made in the catalogue or otherwise in respect of such matter are statements of opinion and are not to be taken as, or as implying, statements or representations of fact. Purchasers shall be deemed to have satisfied themselves by inspection or otherwise as to all such matters. All goods are being sold as seen and the Purchaser assumes full responsibility for examining and selecting the Goods to determine their condition and suitability of use.
10. The Auctioneers reserve the right to withdraw, alter, consolidate or divide lots previously advertised, catalogued or viewed, without any prior notice, and will not be liable for any loss or inconvenience whatsoever caused thereby.
11. If any purchaser neglects or refuses to comply with these Conditions or any of them his deposit money, if any, shall be forfeited and any unremoved lots sold in accordance with Paragraph 6, any expenses or loss caused to the Auctioneers thereby being recoverable from the defaulter as and for liquidated damages. This condition is however without prejudice to the Auctioneer's right to enforce the Contract of Sale if they think fit.



